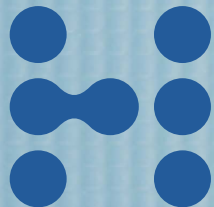
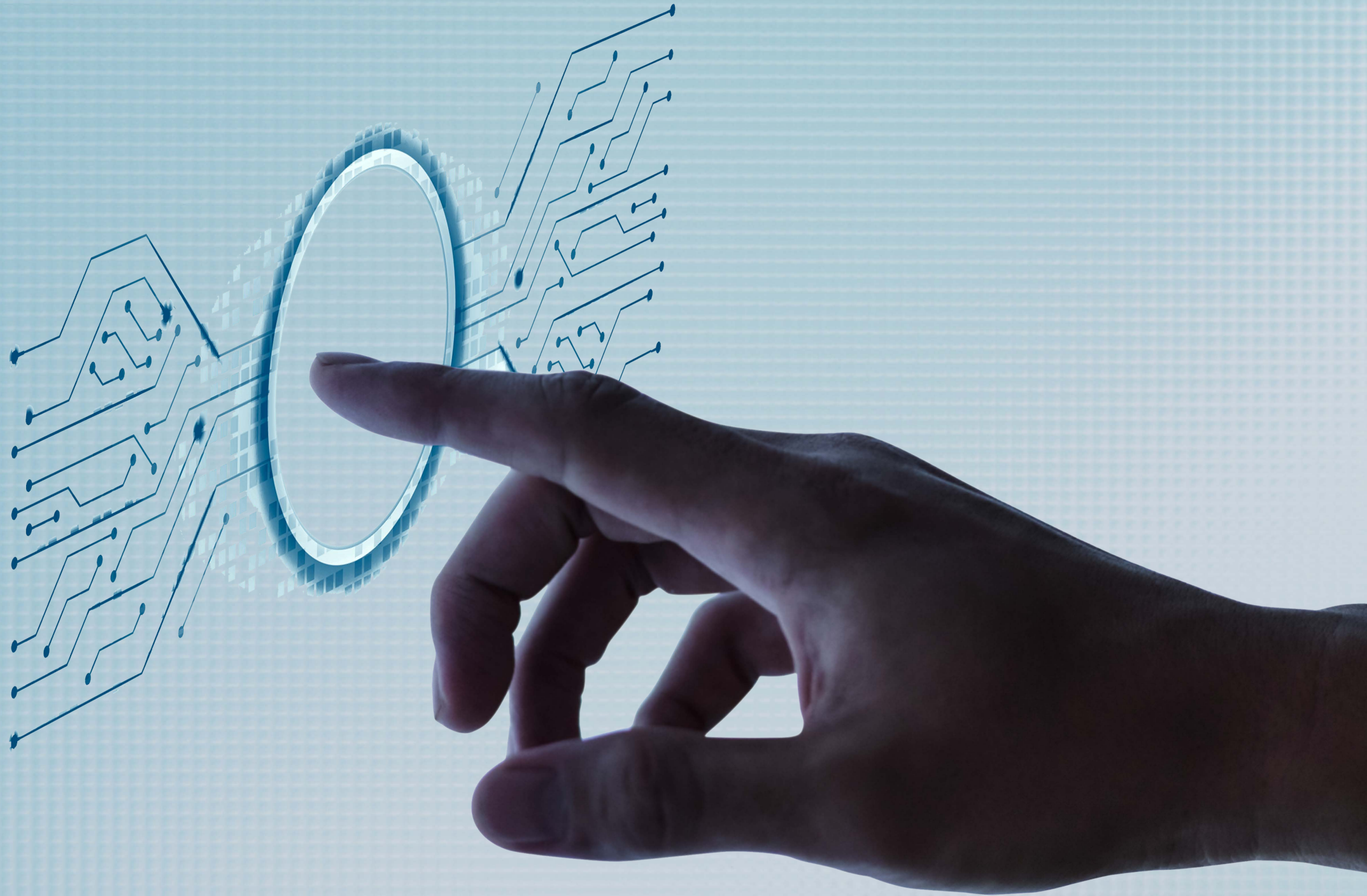


Handshakes DATAMART

Factsheet

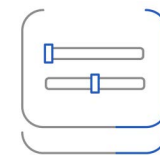


A user-friendly platform to access official registry data of over 4.6 million companies and businesses across Singapore and Malaysia



Official Data Sources

- Corporate registry of Singapore and Malaysia
- Licensed ACRA data partner



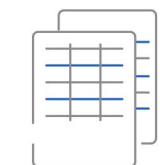
Highly Customisable Search Criteria

- Easy filtering and segmenting
- Up to 13 different search criteria



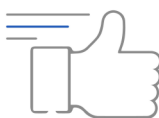
Self-Service at your Convenience

- Access data at any time of the day
- Account setup within one working day
- Instant self top-up credits



Wide Selection of up to 70 Data Points

- Company basic registration details
- Shareholding information
- Appointment information
- Company financials



Quick and Easy Access

- Report available in 10 minutes
- Output in CSV format



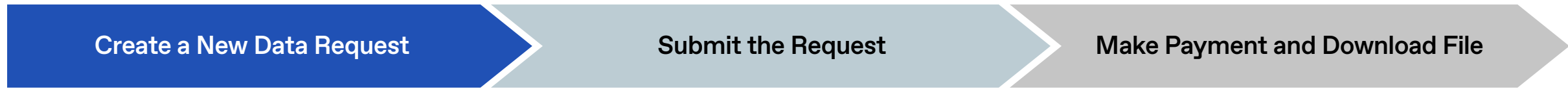
Targeted Results

- Select data points of your choice
- Get specific data in granular form



How does DATAMART Work?

DATAMART gives you quick access to corporate data in a cost-effective manner. Identify the entities you need and get their information instantly.



Step 1:
Define your search criteria to search from more than 4.6 million companies and businesses registered in Singapore and Malaysia.

Step 2:
Select entity information, such as basic registration details, shareholding information, related personnel and companies, as well as financials.

Step 3:
Review and validate your selection before submitting your data request.

Submit and receive an email notification containing your quotation within minutes.

| entity_name | company_registration_number | date_of_incorporation | entity_status | address |
|----------------------------|-----------------------------|-----------------------|---------------|--|
| WEBER PTE. LTD. | 201900123451 | 2/1/19 | Live Company | 1 NORTH BRIDGE ROAD #24-03 HIGH STREET CENTRE |
| PROSACCO SERVICE PTE. LTD. | 201900123452 | 2/1/19 | Live Company | 1 NORTH BRIDGE ROAD #24-03 HIGH STREET CENTRE |
| TREUTEL AND SONS PTE. LTD. | 201900123453 | 2/1/19 | Live Company | 1 NORTH BRIDGE ROAD #24-03 HIGH STREET CENTRE |
| RODA (SG) PTE. LTD. | 201900123454 | 2/1/19 | Live Company | 1 NORTH BRIDGE ROAD #24-03 HIGH STREET CENTRE SINGAPORE 179094 |
| MCWOLF GROUP PTE. LTD. | 201900123455 | 2/1/19 | Live Company | 1 RAFFLES PLACE #28-02 ONE RAFFLES PLACE SINGAPORE 048616 |

Sample Output File (CSV).
This data would remain downloadable for 30 days.



This user-friendly platform serves to deliver targeted corporate data to improve business intelligence.

Key benefits:

- 1 Latest Data**
Updated daily from ACRA
- 2 First Mover Advantage**
Identify opportunities ahead of competitors
- 3 Time & Cost Savings**
Data on-demand 24/7
Buy only what you need

Suitable for:



Business Development

- Lead Generation
- Prospecting
- Customer Relationship Management



Research

- Industry Insights
- Competitor Analysis
- Reports & Recommendation



Business Analytics

- Benchmarking
- Financial & Risk Scoring
- Trend Spotting



Business Intelligence



Discover trends and players in the industry

As the corporate strategy team of a major agriculture company in Malaysia, you would like to discover trends and monitor changes in the industry.

Your Search Criteria

- Malaysia registered companies
 - Companies in agriculture industry
 - Incorporated past 5 years
-

Entity Information You Are Interested In

- Basic Information
- Business Activities
- Financial Information

Lead Generation



Reach out to newly incorporated companies

As the business development team of a major telco in Singapore, you would like to identify newly incorporated companies promptly for early customer outreach.

Your Search Criteria

- Singapore registered companies
 - Companies in wholesale, retail, financial and insurance related industry
 - Incorporated past 6 months
-

Entity Information You Are Interested In

- Basic Information
- Business Activities
- Connected Entities
- Shareholders



Available on APP and API to suit your business needs

Need data instantly? Sign-up to try our DATAMART APP for free!

Need data access frequently? Integrate DATAMART API into your system!

APP

Create New Request

1 Define Search Criteria

2 Select Entity Information

3 Review & Submit

On this page

- Entity Profile (1)
- Financials

Define Search Criteria

Select where entities are registered: Singapore, Malaysia

Select at least 2 criteria to define your entities
Fields marked with * are mandatory

Entity Profile

- Entity Status
- Entity Subtype
- Business Activity (SSIC)
- Incorporation Date

Select Entity Information

Select at least 1 data field

Basic Information

- Entity Name
- Former Name
- Registration Number (UEN)
- Incorporation Date
- Place of Incorporation
- Entity Subtype
- Entity Status
- Previous Status and Status Date
- Registered Office Address

API

```
POST {{host}}/arc/request/new/datamart

{
  "dataset": "CRSG",
  "input": {
    "and": [
      {
        "criteria": "5",
        "parameters": [
          {
            "label": "primary",
            "text": "code",
            "query": [
              "01111",
              "58132"
            ]
          }
        ]
      }
    ]
  },
  "output": [
    "entity_name",
    "company_registration_number",
    "date_of_incorporation",
    "entity_status",
    "primary_ssic_code"
  ]
}
```



Here are our detailed lists of Search Criteria
and Entity Information available on
DATAMART



Search Criteria available for Singapore Corporate Registry Dataset

| # | Search Criteria | | | |
|---|--------------------|---|---|--|
| 1 | Entity Status | <p>Live</p> <ul style="list-style-type: none"> • Live • LIVE (Receiver Or Receiver And Manager Appointed) • Live Company • Live LLP • Live LP • Live PAF | <p>Non - Live</p> <ul style="list-style-type: none"> • Amalgamated • Cancelled • Cancelled (Non Renewal) • Cancelled (Non-Renewal) • Ceased Registration • Ceased Registration (Transferred To Singapore) • Converted To LLP • Dissolved • Dissolved – Compulsory Winding Up • Dissolved – Compulsory Winding Up (Insolvency) • Dissolved – Creditors’ Voluntary Winding Up • Dissolved – Members’ Voluntary Winding Up • Dissolved – Partners’ Voluntary Winding Up • Dissolved - Simplified Winding Up • Dissolved (Foreign Co) • Dissolved-Pursuant To Section 212(1)(D) Of The Companies Act • Removed (Applied To Be Revoked) • Removed (Dissolved) • Struck Off • Struck Off - Early Dissolution • Struck Off - Early Dissolution (Simplified Winding Up) • Terminated | <p>Others</p> <ul style="list-style-type: none"> • Cancellation In Progress • In Liquidation – Compulsory Winding Up • In Liquidation – Compulsory Winding Up (Insolvency) • In Liquidation – Creditors’ Voluntary Winding Up • In Liquidation – Members’ Voluntary Winding Up • In Liquidation – Partners’ Voluntary Winding Up • In Liquidation – Simplified Winding Up • In Liquidation (Foreign Co) • Registration Expired And Has Not Been Renewed • Suspended • To Be Ceased • Under Judicial Management • Gazetted To Be Struck Off |
| 2 | Entity Subtype | Including all applicable subtypes of Companies, Partnerships and other types of businesses | | |
| 3 | Business Activity | <ul style="list-style-type: none"> • Both Industry and Activity follow SSIC 2020 • Industries are corresponding to SSIC “Sections” • Activities are corresponding to SSIC “Sub-class” or 5-digit codes | | |
| 4 | Incorporation Date | Inclusive date range | | |



Search Criteria available for Singapore Corporate Registry Dataset

| # | Search Criteria | |
|---------|---|--|
| 5 | Group's or Company's Employee Size | Only applicable for companies which file financials – those who do not file financials do not have this indicator |
| 6 to 11 | Financials <ul style="list-style-type: none"> • Revenue • Profit or Loss before Tax • Profit or Loss after Tax • Total Assets • Total Liabilities • Total Equity | <ul style="list-style-type: none"> • In SGD; both negative and positive values are accepted • Inclusive ranges (Minimum and/or Maximum values) • Only applicable for companies which file financials – those who do not file financials will not appear in the results • As long as either group-level or company-level figures meet the search criteria, the entities will be included in the results |



Entity Information available for Singapore Corporate Registry Dataset

| Basic Information | Business Activities | Issued Share Capital | Paid-up Share Capital |
|---|--|---|---|
| <ul style="list-style-type: none"> Entity Name Former Name Registration Number (UEN) Incorporation Date Place of Incorporation Entity Subtype Entity Status Previous Status and Status Date Registered Office Address | <ul style="list-style-type: none"> Primary SSIC Code Primary Business Description Secondary SSIC Code Secondary Business Description | <ul style="list-style-type: none"> Issued Share Category Issued Share Amount Number of Issued Shares Currency of Issued Shares Issued Share Type | <ul style="list-style-type: none"> Paid-up Share Category Paid-up Share Amount Currency of Paid-up Shares Paid-up Share Type |
| Audit Firm | Shareholders | Financials | |
| <ul style="list-style-type: none"> Audit Firm | <ul style="list-style-type: none"> Name of Shareholder Registration Number of Corporate Shareholders (Partial) ID Number of Individual Shareholders Place of Incorporation of Corporate Shareholders Citizenship of Individual Shareholders Share Type Currency of Shares Number of Shares allotted to Shareholder Share Allotment Date | <p>Filing Information</p> <ul style="list-style-type: none"> Financial Period End Date Indicator: Group's or Company's Account Indicator: Group or Company has more than 50 Employees Currency of Financial Statements <p>Independent Auditor's Report</p> <ul style="list-style-type: none"> Independent Auditors' Report Date Indicator: Whether There is Emphasis of Matter in Independent Auditors' Report Indicator: Whether Emphasis of Matter is Only Due to Matters relating to Going Concern <p>Statement of Financial Position (Balance Sheet)</p> <ul style="list-style-type: none"> Total Assets Total Current Assets | <ul style="list-style-type: none"> Total Liabilities Total Current Liabilities Total Equity Accumulated Profits or Losses <p>Income Statement</p> <ul style="list-style-type: none"> Revenue Finance Costs Profit or Loss before Tax Profit or Loss from Discontinued Operations Profit or Loss after Tax <p>Statement of Cash Flows</p> <ul style="list-style-type: none"> Cash Flow from Operating Activities Cash Flow from Investing Activities Cash Flow from Financing Activities |
| Connected Entities | | | |
| <ul style="list-style-type: none"> Name of Connected Entities Registration Number of Connected Firms (Partial) ID Number of Connected Persons Place of Incorporation of Connected Firms Citizenship of Connected Persons Address of Connected Entities Description of Relationship Relationship Start Date Relationship End Date | | | |

Certain information may not be applicable to or available for all Entities, subject to data availability at official sources.



Search Criteria available for Malaysia Corporate Registry Dataset

| # | Search Criteria | | | |
|---|--|--|------------|--|
| 1 | Entity Status | Exist | Winding Up | Dissolved / Removed / Ceased Business <ul style="list-style-type: none"> • Dissolved • Dissolved Conversion to LLP • Removed • Ceased Business |
| 2 | Entity Subtype | Including all applicable subtypes of Companies, Partnerships and other types of businesses | | |
| 3 | Business Activity | Free text search (Business Activity filed by companies can be in English or Malay) | | |
| 4 | Incorporation Date | Inclusive date range | | |
| 5 | Financials <ul style="list-style-type: none"> • Revenue • Profit or Loss after Tax • Total Assets • Total Liabilities • Total Equity | <ul style="list-style-type: none"> • In MYR; both negative and positive values are accepted • Inclusive ranges (Minimum and/or Maximum values) • Only applicable for companies which file financials – those who do not file financials will not appear in results • As long as either group-level or company-level figures meet the search criteria, the entities will be included in the results | | |



Entity Information available for Malaysia Corporate Registry Dataset

| Basic Information | Business Activities | Connected Entities | Shareholders |
|--|--|---|--|
| <ul style="list-style-type: none"> Entity Name Former Name Registration Number Incorporation Date Place of Incorporation Entity Subtype Entity Status Previous Status and Status Date Registered Office Address | <ul style="list-style-type: none"> Primary Business Description Secondary Business Description | <ul style="list-style-type: none"> Name of Connected Entities Registration Number of Connected Firms (Partial) ID Number of Connected Persons Place of Incorporation of Connected Firms Citizenship of Connected Persons Address of Connected Entities Description of Relationship Relationship Start Date Relationship End Date | <ul style="list-style-type: none"> Name of Shareholder Registration Number of Corporate Shareholders (Partial) ID Number of Individual Shareholders Place of Incorporation of Corporate Shareholders Citizenship of Individual Shareholders Currency of Shares Number of Shares allotted to Shareholder Share Allotment Date |
| Financials | | | |
| Filing Information <ul style="list-style-type: none"> Financial Period End Date Indicator: Group's or Company's Account Currency of Financial Statements | Statement of Financial Position (Balance Sheet) <ul style="list-style-type: none"> Total Assets Total Liabilities Total Equity | Income Statement <ul style="list-style-type: none"> Revenue Profit or Loss after Tax | |

Certain information may not be applicable to or available for all Entities, subject to data availability at official sources.



Handshakes

For more details on our product,
contact us at

enquiries@handshakes.ai

